

Gelcoat Quality Guide

A guide to application faults and possible causes



Common faults in gelcoat - Scott Bader has the answers



COLOUR TEARING

- Pigment separated from resin
- Improper spray technique
- Long geltime, sagging



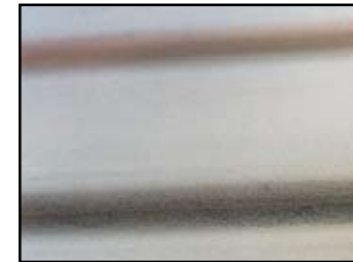
COLOUR SEPARATION

- Insufficient mixing
- Sagging, drainage
- Poor gelcoat application



COLOUR MOTTLING

- Gelcoat loow in thixotropy
- Poor pigment compatibility
- Viscosity too low



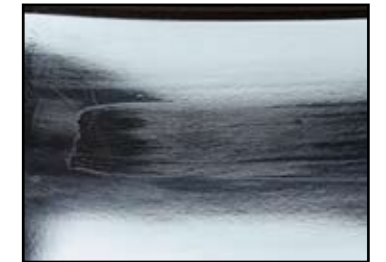
COLOUR SPECKS

- Poorly ground/mixed pigments
- Contamination
- Poorly maintained equipment



POROSITY

- Gelcoat too viscous to release air
- Cold gelcoat and/or mould
- Gelled too quickly, entrapping air



'WATER MARKING' ETCHING ON MOULD

- Areas of thin, double gelcoating on mould
- Two colours gelcoated on mould
- Solvent attack



PARALLEL CRACKS

- Flex cracking
- Gelcoat too thick
- Laminate too thin/flexible



STAR CRACKING

- Reverse impact
- Gelcoat too thick
- Crack pattern transferred from mould



CRAZING

- Chemical attack
- Excessive heat
- Contamination



DIMPLING

- Too heavy wet-on wet spray application
- Insufficient consolidation
- Contamination



WRINKLING

- Insufficient cure
- Gelcoat too thin
- Back-up too rapid



SAGGING

- Gelcoat too thick
- Geltime too long
- Viscosity/thixotropy too low



BLISTERS IN LAMINATES

- Water ingress
- Damp reinforcement
- Air voids



GELCOAT BLISTERS

- Air voids on release
- Unreacted catalyst
- Solvent contamination



FIBRE PATTERN

- Gelcoat too thin
- High exotherm in laminate
- Insufficient cure, released too soon



GELCOAT PEELING

- Contamination
- Gelcoat too fully cured
- Geltime too long - release wax dissolved



DE-WETTING (BRUSH)

- Brush gelcoat applied too thinly
- Incompatible release system
- Contamination



DE-WETTING (SPRAY)

- Spray gelcoat applied too thinly
- Incompatible release system
- Contamination

Scott Bader Composites Europe

HEAD OFFICE

Scott Bader Company Limited

Wollaston
England
Tel: +44 1933 663100
Fax: +44 1933 666139
email: composites@scottbader.com

Scott Bader SA

Amiens
France
Tel: +33 3 22 66 27 66
Fax: +33 3 22 66 27 80
email: composites@scottbader.fr

Scott Bader Iberica

Barcelona
Spain
Tel: +34 93 553 1162
Fax: +34 93 553 1163
email: composites@scottbader.es

Scott Bader S.A.

Zur Drehscheibe 5
D - 92637 Weiden
Germany
Tel: +49 961 401 84474
Fax: +49 961 401 84476
email: composites@scottbader.de

Scott Bader Ireland

Dublin
Ireland
Tel: +353 1801 5660
Fax: +353 1801 5657
email: composites@scottbader.ie

Scott Bader Scandinavia AB

Falkenberg
Sweden
Tel: +46 346 10100
Fax: +46 346 59226
email: composites@scottbader.se

Scott Bader Eastern Europe

Liberec
Czech Republic
Tel: +420 48 5228 344/5111 255
Fax: +420 48 5228 345/5111 254
email: composites@scottbader.cz

Scott Bader d.o.o.

10 000 Zagreb
Zitnjak BB
Croatia
Tel: +385 1 240 6440
Fax: +385 1 240 4573
email: info@scottbader.hr

Scott Bader Group Companies

Scott Bader Inc

Stow, OH
USA
Tel: +1 330 920 4410
Fax: +1 330 920 4415
email: info@scottbaderinc.com

Scott Bader (Pty) Limited

Hammarsdale
Republic of South Africa
Tel: +27 31 736 8500
Fax: +27 31 736 8511
email: composites@scottbader.co.za

Scott Bader Middle East Limited

Jebel Ali
Dubai
Tel: +971 488 35025
Fax: +971 488 35319
email: info@scottbader.co.ae

Scott Bader L.L.C.

P O Box 261970
Dubai Investment Park
Dubai
Tel: +971 488 53121
Fax: +971 488 32030
email: info@scottbader.co.ae

Scott Bader Asia Pacific

Shanghai 200042
China
Tel: +86 (21) 52987778 / +86 (21) 52988887
Fax: +86 (21) 52988889
email: info@scottbader.cn



Solutions for Composite Applications



Visit us at:

scottbader.com